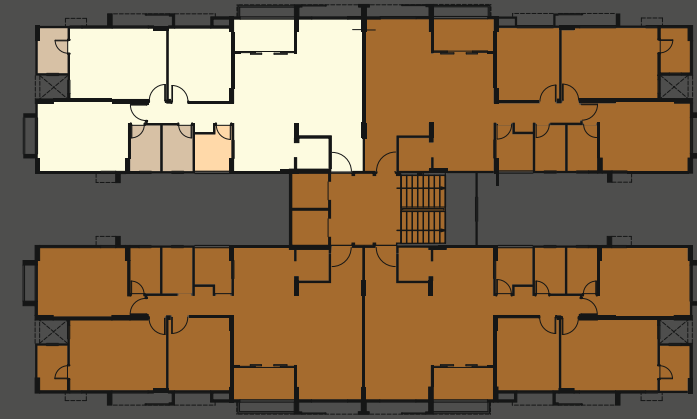


# Unit Plan



Carpet Area : 1242 sq. ft.  
Built up Area : 1485 sq. ft.  
Super Built up : 2025 sq. ft.

# “@”

Threshold of the happening location and great sense of security.

## Specification

- ◎ R.C.C frame Structure with external periphery wall built in brick masonry
- ◎ Internal mala Plaster with lapi finish and external double coat sand face plaster with water proof acrylic paint for exteriors. Some exterior walls will be Textured.
- ◎ Vitrified tiles flooring in all areas. Kota stone in the wash area. Ceramic tiles in balcony.
- ◎ Colored glazed tiles dodo up lintel, good quality sanitary ware with C.P. fittings
- ◎ Granite (sandwich type) platform along with stainless steel sink
- ◎ Fully glazed color anodized aluminum window
- ◎ Wooden frame in all doors, decorative main door, all other doors will be flush doors
- ◎ ISI standard Three phase concealed copper wiring with sufficient electric points in all rooms.

## Location

- ◎ Located in a prime and pollution free residential area of Ahmedabad
- ◎ Close to AUDA's 200 ft. Ring Road off South Bopal
- ◎ All amenities & facilities like grocery, stationary, chemist, vegetable vendors, schools, hospitals and petrol pump are in vicinity
- ◎ Adjacent to well known malls & multiplexes
- ◎ Renowned schools such as DPS, Shiv Ashish, Tulip, Sanskar Dham, Eklavya, Swastik, St. Anne & Homeopathic College & Krishna Heart etc. are located nearby